



Pattern Collection: Women



Cardinal Jacket

Designed by Universal Yarn Design Team

SIZE

Small (Medium, Large, 1X, 2X, 3X)

FINISHED MEASUREMENTS

Back Width: 14 (16, 18, 20, 22, 24)"; to fit approximate bust measurements of 34 (38, 42, 46, 50, 54)"

Note: to find the right size, measure between your arms across your back. If you are between sizes, go down a size. If the back width is too wide, sleeves will not sit well on your shoulders.

MATERIALS

Universal Yarn Major (100% acrylic; 200g/328 yds)

- 119 Crimson – 3 (3, 3, 4, 4, 4) skeins

Needles: US Size 10 (6 mm) 40" circular or size needed to obtain gauge

Notions: Tapestry needle, stitch markers

GAUGE

15 sts x 20 rows = 4" in Shifting Horseshoes patt

Save time, check your gauge.

Knit, Relax, Smile, Repeat!

2017 © Universal Yarn, Inc.
All rights reserved.
www.universalyarn.com

This pattern may not be reproduced for business, trade or sale.

PATTERN NOTES

This cozy open front cardigan is knit sideways. Armholes are formed binding off stitches and then casting on over the next row. Sleeves are knit flat, separately, and are joined to the armhole openings.

When binding off stitches for armholes and shaping sleeves, keep stitches in pattern as much as possible. Be sure to only work an increase in the Shifting Horseshoes pattern if there are enough stitches to work corresponding decreases. If there are not enough stitches for a full pattern repeat, you can work these extra stitches in stockinette stitch instead.

Wear with the fronts hanging loose and open, or secure with your favorite shawl pin or stick.

STITCH GUIDE

Shifting Horseshoes

(multiple of 11 sts + 1)

Row 1 (RS): Ssk, * k2, m1, k1, m1, k5, sl 2-k1-p2sso; rep from * to last 10 sts, k2, m1, k1, m1, k5, k2tog.

WS Rows 2-12: Purl.

Row 3: Ssk, * k1, m1, k3, m1, k4, sl 2-k1-p2sso; rep from * to last 10 sts, k1, m1, k3, m1, k4, k2tog.

Row 5: Ssk, * m1, k5, m1, k3, sl 2-k1-p2sso; rep from * to last 10 sts, m1, k5, m1, k3, k2tog.

Row 7: Ssk, * k5, m1, k1, m1, k2, sl 2-k1-p2sso; rep from * to last 10 sts, k5, m1, k1, m1, k2, k2tog.

Row 9: Ssk, * k4, m1, k3, m1, k1, sl 2-k1-p2sso; rep from * to last 10 sts, k4, m1, k3, m1, k1, k2tog.

Row 11: Ssk, * k3, m1, k5, m1, sl 2-k1-p2sso; rep from * to last 10 sts, k3, m1, k5, m1, k2tog.

Rep Rows 1-12 for patt.

CARDIGAN

Cast on 103 (103, 103, 103, 114, 114) sts. Knit 14 rows in garter st.

Left Front / Establish Pattern

Row 1 (RS): K7, pm, work Row 1 of Shifting Horseshoes patt to last 7 sts, pm, k7. Patt will be repeated 8 (8, 8, 8, 9, 9) times across row.

Row 2 (WS): Knit to m, work Row 2 of patt to m, knit to end.

Cont in patt as est'd, keeping 7 sts each edge in garter st until piece meas 18 (20, 22, 24, 26, 28)" from cast-on edge, ending with WS row.

Left Armhole

Row 1 (RS): Knit to m, work in patt over 45 (39, 39, 39, 45, 45) lower body sts, bind off next 23 (29, 29, 29, 34, 34) sts for armhole, work in patt over rem 28 collar sts.

Row 2 (WS): Work to bind-off gap, cast on 23 (29, 29, 29, 34, 34) sts, work in patt to end – 103 (103, 103, 103, 114, 114) sts.

Back

Work even in patt until piece meas 14 (16, 18, 20, 22, 24)" from Left Armhole bind-off, ending with WS row.

Right Armhole

Work as for Left Armhole.

Right Front

Work even in patt until piece meas 16 (18, 20, 22, 24, 26)" from Right Armhole bind-off, ending with RS row. Knit 14 rows in garter st. Bind off all sts.

SLEEVES

Beg at underarm, pick up and knit 47 (58, 58, 58, 69, 69) sts around armhole opening, do not join to work in the rnd.

Establish Pattern

Row 1 (RS): K1, work Row 1 of Shifting Horseshoes patt to last st, k1. Patt will be repeated 4 (5, 5, 5, 6, 6) times across row.

Row 2 (WS): P1, work Row 2 of Shifting Horseshoes patt to last st, p1. Cont in patt until piece meas 3".

Shape Sleeve

Dec row (RS): K1, k2tog, work in patt to last st, ssk, k1 – 2 sts dec'd. Rep Dec row every 10 (6, 6, 6, 4, 4) rows, 1 (9, 9, 9, 15, 15) more time(s), then rep Dec row every 8 (4, 4, 4, 2, 2) rows, 6 (2, 2, 2, 1, 1) time(s) – 31 (34, 34, 34, 35, 35) sts rem.

Work even in patt, if necessary until Sleeve meas 16½", ending with a WS row, dec'ing 0 (1, 1, 1, 0, 0) sts on the last row – 31 (33, 33, 33, 35, 35) sts rem. Work in K1, P1 Ribbing until piece meas 19½", ending with WS row. Bind off all sts loosely in patt.

Knit, Relax, Smile, Repeat!

2017 © Universal Yarn, Inc.

All rights reserved.

www.universalyarn.com

This pattern may not be reproduced for business, trade or sale.

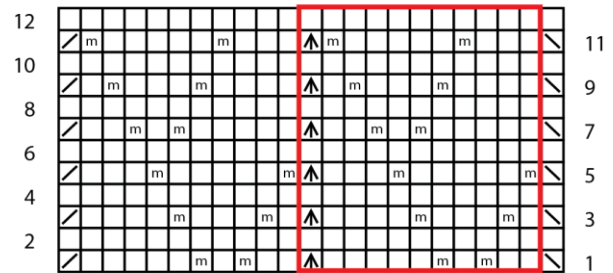
FINISHING

Block piece to finished measurements. Sew Sleeve seam. Weave in ends.

Abbreviations

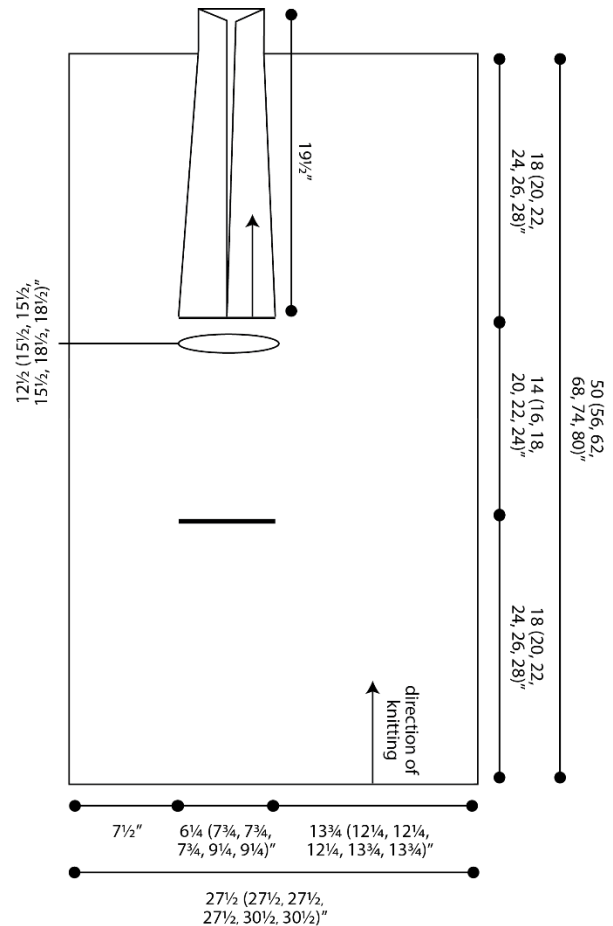
circ	circular
cont	continue
dec('d)	decrease(d)
est'd	established
garter st	knit every row
inc('d)	increase(d)
k	knit
k2tog	knit 2 stitches together (1 st dec'd)
m	marker
m1	insert left needle from front to back under horizontal strand of yarn lying between st just worked and next st, knit or purl this st through the back loop (1 st inc'd)
meas	measures
ndl	needle
patt	pattern
p	purl
pm	place marker
psso	pass slipped stitch(es) over
rem	remain(ing)
rep	repeat
RS	right side
sl	slip
ssk	slip next 2 sts individually knitwise, slip them back to left needle in this position, knit them together through the back loops (1 st dec'd)
st(s)	stitch(es)
St st	Stockinette stitch (knit on RS rows, purl on WS rows; in the rnd, knit every rnd)
tog	together
WS	wrong side

Shifting Horseshoes



Key

- knit on RS, purl on WS
- ▤ k2tog
- ▥ ssk
- ▲ sl 2-k1-p2sso
- ◻ m1
- pattern repeat



Knit, Relax, Smile, Repeat!

2017 © Universal Yarn, Inc.
All rights reserved.
www.universalyarn.com

This pattern may not be reproduced for business, trade or sale.