



Pattern Collection: Home



Spring Stripe Rug

Designed by Universal Yarn Design Team

SIZES

One

FINISHED MEASUREMENTS

Width: 38"

Length: 62"

MATERIALS

Fibra Natura Java (100% hemp;
100g/219 yds)

- 102 Hazelnut (MC) – 7 skeins
- 108 Golden Sun – (CC1) – 1 skein
- 111 Fossil Gray (CC2) – 1 skein
- 106 Desert Rose (CC3) – 1 skein
- 101 Parchment (CC4) – 2 skeins
- 109 Poppy Red (CC5) – 1 skein
- 105 Horizon Pink (CC6) – 1 skein

Hook: US Size F-5 (3.75 mm) *or size needed to obtain gauge*

Notions: Tapestry needle

GAUGE

18 sts x 13½ rows = 4" in half double
crochet

Save time, check your gauge.

Knit. Relax. Smile. Repeat!

2018 © Universal Yarn, Inc.

All rights reserved.

www.universalyarn.com

This pattern may not be reproduced for business, trade or sale.

PATTERN NOTES

This colorful rug will make any house feel like a home. A festive mix of stripes and tapestry crochet shapes will keep your hands and your eyes entertained.

Spring Stripes is worked entirely in half double crochet. The tapestry sections are worked in half double crochet. During these sections, crochet around the unused strands of the other colors in each row.

When switching colors, complete all but the last step of the stitch in the old color, then pull the new color through the last two loops on the hook to finish the stitch. Cut yarn for each stripe.

STITCH GUIDE

Half Double Crochet (hdc)

(any number of sts)

Row 1: Ch 1, hdc in each st across, turn.

Rep Row 1 for patt.

RUG

With MC, ch 170.

Stripe Section 1

Row 1: Hdc in second ch from hk and each ch across, turn – 169 hdc.

Rows 2-3: Work Row 1 of hdc patt.

Rows 4-6: With CC1, work Row 1 of hdc patt.

Rows 7-8: With MC, work Row 1 of hdc patt.

Rows 9-11: With CC2, work Row 1 of hdc patt.

Rows 12-13: With MC, work Row 1 of hdc patt.

Rows 14-16: With CC3, work Row 1 of hdc patt.

Rows 17-18: With MC, work Row 1 of hdc patt.

Tapestry Section 1

Rows 1-12: Work Rows 1-12 of Tapestry Chart 1.

Stripe Section 2

Rows 1-2: With MC, work Row 1 of hdc patt.

Rows 3-6: With CC5, work Row 1 of hdc patt.

Rows 7-8: With MC, work Row 1 of hdc patt.

Rows 9-12: With CC6, work Row 1 of hdc patt.

Rows 13-14: With MC, work Row 1 of hdc patt.

Rows 15-18: With CC1, work Row 1 of hdc patt.

Rows 19-20: With MC, work Row 1 of hdc patt.

Rows 21-24: With CC4, work Row 1 of hdc patt.

Rows 25-26: With MC, work Row 1 of hdc patt.

Rows 27-30: With CC2, work Row 1 of hdc patt.

Rows 31-32: With MC, work Row 1 of hdc patt.

Tapestry Section 2

Rows 1-8: Work Rows 1-8 of Tapestry Chart 2.

Stripe Section 3

Rows 1-2: With MC, work Row 1 of hdc patt.

Rows 3-6: With CC2, work Row 1 of hdc patt.

Rows 7-8: With MC, work Row 1 of hdc patt.

Rows 9-12: With CC4, work Row 1 of hdc patt.

Rows 13-14: With MC, work Row 1 of hdc patt.

Rows 15-18: With CC1, work Row 1 of hdc patt.

Rows 19-20: With MC, work Row 1 of hdc patt.

Rows 21-24: With CC6, work Row 1 of hdc patt.

Rows 25-26: With MC, work Row 1 of hdc patt.

Rows 27-30: With CC5, work Row 1 of hdc patt.

Rows 31-32: With MC, work Row 1 of hdc patt.

Tapestry Section 3

Rows 1-12: Work Rows 1-12 of Tapestry Chart 1.

Stripe Section 4

Work as for Stripe Section 2.

Tapestry Section 4

Rows 1-8: Work Rows 1-8 of Tapestry Chart 2.

Stripe Section 5

Work as for Stripe Section 3.

Tapestry Section 5

Rows 1-12: Work Rows 1-12 of Tapestry Chart 1.

Stripe Section 6

Rows 1-2: With MC, work Row 1 of hdc patt.

Rows 3-5: With CC3, work Row 1 of hdc patt.

Rows 6-7: With MC, work Row 1 of hdc patt.

Rows 8-10: With CC2, work Row 1 of hdc patt.

Rows 11-12: With MC, work Row 1 of hdc patt.

Rows 13-15: With CC1, work Row 1 of hdc patt.

Rows 16-18: With MC, work Row 1 of hdc patt.

Border

Rnd 1: Ch 1, sc in each hdc to corner, 3 sc in corner, sc evenly along side of Rug at a rate of approximately 4 sc for every 3 rows, 3 sc in corner, sc in each ch from beg ch edge, 3 sc in corner, sc evenly along other side of Rug to beg sc, 2 sc in same st as beg sc, join with sl st to beg sc. Fasten off.

FINISHING

Weave in ends and block.

Knit. Relax. Smile. Repeat!

2018 © Universal Yarn, Inc.

All rights reserved.

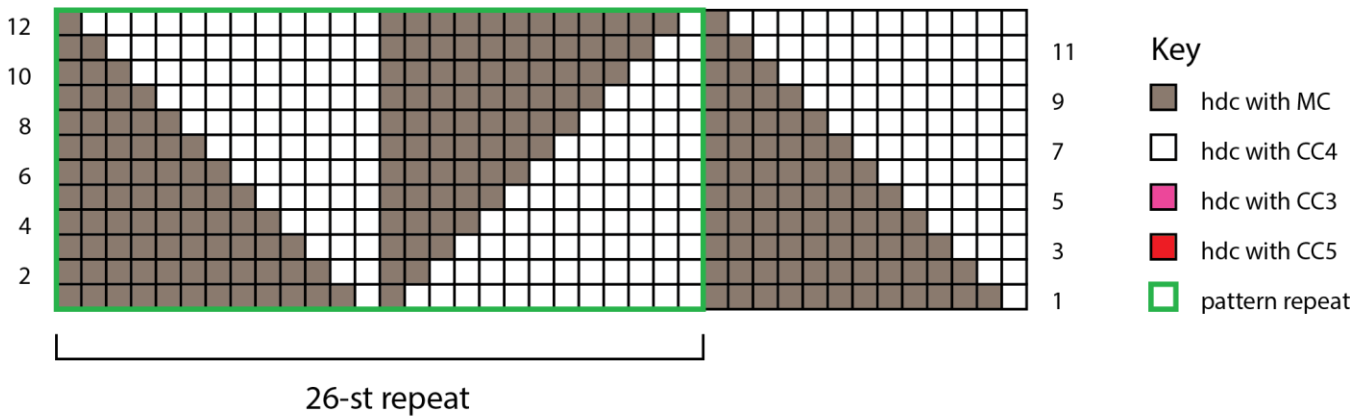
www.universalyarn.com

This pattern may not be reproduced for business, trade or sale.

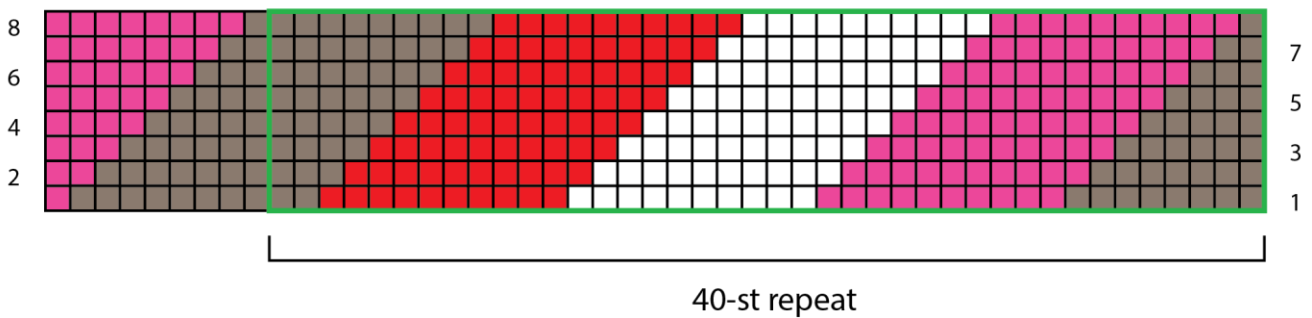
Abbreviations

- beg** begin(ning)
- CC** contrast color
- ch** chain
- hdc** half double crochet
- hk** hook
- MC** main color
- patt** pattern
- rep** repeat
- sc** single crochet
- sl** slip
- st(s)** stitch(es)

Tapestry Chart 1



Tapestry Chart 2



Knit. Relax. Smile. Repeat!

2018 © Universal Yarn, Inc.

All rights reserved.

www.universalyarn.com

This pattern may not be reproduced for business, trade or sale.