



skacel

Ethereal Wrap

Designed by Evelyn A Clark



SKILL LEVEL: 

SIZE and MATERIALS:

Approximate Size (after blocking): 22" wide x 80" long

Featured Yarns:

Schoppel Lace Ball 100; 100% Virgin Superwash Wool; 875 yds / 100g ball; one (1) ball.

Zitron Traum Seide; 100% Mulberry Silk; 875 yds / 100g hank; one (1) hank.

addi Needles and Notions:

3.5mm (approx US size 4) straight or circular needles

or size to obtain gauge

Removable stitch marker; tapestry needle; stainless steel blocking pins, (*optional:* blocking wires)

All yarn and needles distributed by **skacel collection, inc.**

GAUGE (Unblocked): 20 sts = 4" (10cm) in garter stitch

Note on yarn usage: *Because gauge can vary (especially in rows), it is important to ensure that there is enough yarn in the single ball to finish the project. Here's a tip to get the most efficient use of the yarn.... Before beginning, weigh the ball of yarn, and weigh it again after working the Beginning Border. Subtract the second weight from the first to determine how much was used for the Beginning Border. This this same amount must be reserved in order to have enough to finish the Ending Border.*

Notes on construction: **1)** *It is helpful to hang a removable stitch marker along the side edge to mark the beginning of odd numbered rows. 2)* Slip the first stitch of every row purlwise with yarn at front of work. **3)** *Lace will grow approximately 1/3 longer when blocked, so stretch the piece when measuring the length. 4)* Lace can be knit from written instructions or charts.

To save time, check your gauge and read all instructions thoroughly before beginning.

skacel collection, Inc.

Copyright © 2015 - All rights reserved.
www.skacelknitting.com

INSTRUCTIONS:

Beginning Border:

Loosely CO 83 sts.

Rows 1 - 4: Sl1, knit to end of row.

Row 5 (RS): Sl1, k1, *k2tog, yo; rep from * to last 3 sts, k3.

Row 6 (and all WS rows): Sl1, knit to end of row.

Row 7: Sl1, knit to end of row.

Row 9: Sl1, k1, k2tog, yo, knit to last 4 sts, yo, SSK, k2.

Row 11: Sl1, k6, (k2tog, yo, k1, yo, SSK, k3) 9x, k4.

Row 13: Sl1, k1, k2tog, yo, k2, (k2tog, yo, k3, yo, SSK, k1) 9x, k1, yo, SSK, k2.

Row 15: Sl1, k4, k2tog, yo, k2tog, yo, k1, (yo, SSK, yo, SK2P, yo, k2tog, yo, k1) 8x, yo, SSK, yo, SSK, k5.

Row 17: Sl1, k1, k2tog, yo, k2, (k2tog, yo, k3, yo, SSK, k1) 9x, k1, yo, SSK, k2.

Row 19: Sl1, k5, (yo, SSK, yo, SK2P, yo, k2tog, yo, k1) 9x, k5.

Row 21: Sl1, k1, k2tog, yo, k3, (yo, SSK, k1, k2tog, yo, k3) 9x, yo, SSK, k2.

Row 23: Sl1, k7, (yo, SK2P, yo, k5) 9x, k3.

Row 25: Sl1, k1, k2tog, yo, knit to last 4 sts, yo, SSK, k2.

Row 27: Sl1, k6, k2tog, yo, k1, yo, SSK, k5, k2tog, yo, k1, yo, SSK, k7.

Row 29: Sl1, k1, k2tog, yo, k2, k2tog, yo, k3, yo, SSK, k1, (k2tog, yo) 27x, k2, k2tog, yo, k3, yo, SSK, k2, yo, SSK, k2.



Traum Seide Hand Dyed #102

Row 31: Sl1, k4, k2tog, yo, k2tog, yo, k1, yo, SSK, yo, SSK, k5, k2tog, yo, k2tog, yo, k1, yo, SSK, yo, SSK, k5.

Row 33: Sl1, k1, k2tog, yo, k2, k2tog, yo, k3, yo, SSK, k1, k2tog, yo, k5, yo, SSK, k1, k2tog, yo, k3, yo, SSK, k2, yo, SSK, k2.

Center Section:

Row 35 (CR 1): Sl1, k5, yo, SSK, yo, SK2P, yo, k2tog, yo, k5, k2tog, yo, k1, (yo, SSK, k1, k2tog, yo, k1) 7x, yo, SSK, k5, yo, SSK, yo, SK2P, yo, k2tog, yo, k6.

Row 36 (CR2 and all WS rows): Sl1, knit to end of row.

Row 37 (CR 3): Sl1, k1, k2tog, yo, k3, yo, SSK, k1, k2tog, yo, k2, k2tog, yo, k1, k2tog, yo, k2, (k1, yo, SK2P, yo, k2) 7x, k1, yo, SSK, k1, yo, SSK, k2, yo, SSK, k1, k2tog, yo, k3, yo, SSK, k2.



Traum Seide Hand Dyed #107

yo, k3, yo, SSK, k2.

Row 39 (CR5): Sl1, k7, yo, SK2P, yo, k8, yo, SK2P, (yo, k3, yo, SK2P) 7x, yo, k8, yo, SK2P, yo, k8.

Row 41 (CR 7): Sl1, k1, k2tog, yo, k10, k2tog, yo, k5, yo, SSK, k10, yo, SSK, k2.

Row 43 (CR 9): Sl1, k6, k2tog, yo, k1, yo, SSK, k6, k2tog, yo, k1, (yo, SSK, k1, k2tog, yo, k1) 7x, yo, SSK, k6, k2tog, yo, k1, yo, SSK, k7.

Row 45 (CR 11): Sl1, k1, k2tog, yo, k2, k2tog, yo, k3, yo, SSK, k1, k2tog, yo, k1, k2tog, yo, k2, (k1, yo, SK2P, yo, k2) 7x, k1, yo, SSK, k1, yo, SSK, k1, k2tog, yo, k3, yo, SSK, k2, yo, SSK, k2.

Row 47 (CR 13): Sl1, k4, k2tog, yo, k2tog, yo, k1, yo, SSK, yo, SSK, k5, yo, SK2P, (yo, k3, yo, SK2P) 7x, yo, k5, k2tog, yo, k2tog, yo, k1, yo, SSK, yo, SSK, k5.

Row 49 (CR 15): Sl1, k1, k2tog, yo, k2, k2tog, yo, k3, yo, SSK, k1, k2tog, yo, k5, yo, SSK, k1, k2tog, yo, k3, yo, SSK, k2, yo, SSK, k2.

Row 50 (CR 16): Sl1, knit to end of row.

Work Rows 35 - 50 (CRs 1 - 16) a total of 30x, or to desired length (see **Note on yarn usage**, above). Each rep should measure approximately 1.75" after blocking.

skacel collection, Inc.

Copyright © 2015 - All rights reserved.
www.skacelknitting.com

Ending Border:

Row 515 (CR 1): Sl1, k5, yo, SSK, yo, SK2P, yo, k2tog, yo, k5, yo, SSK, yo, SK2P, yo, k2tog, yo, k6.

Row 516 (CR 2 and all WS rows): Sl1, knit to end of row.

Row 517 (CR 3): Sl1, k1, k2tog, yo, k3, yo, SSK, k1, k2tog, yo, k2, (k2tog, yo) 27x, k3, yo, SSK, k1, k2tog, yo, k3, yo, SSK, k2.

Row 519 (CR5): Sl1, k7, yo, SK2P, yo, k6, yo, SK2P, yo, k8.

Row 521 (CR 7): Sl1, k1, k2tog, yo, knit to last 4 sts, yo, SSK, k2

Row 523 (CR 9): Sl1, k6, (k2tog, yo, k1, yo, SSK, k3) 9x, k4.

Row 525 (CR 11): Sl1, k1, k2tog, yo, k2, (k2tog, yo, k3, yo, SSK, k1) 9x, k1, yo, SSK, k2.

Row 527 (CR 13): Sl1, k4, k2tog, yo, k2tog, yo, k1, (yo, SSK, yo, SK2P, yo, k2tog, yo, k1) 8x, yo, SSK, yo, SSK, k5.

Row 529 (CR 15): Sl1, k1, k2tog, yo, k2, (k2tog, yo, k3, yo, SSK, k1) 9x, k1, yo, SSK, k2.

Row 531 (CR 17): Sl1, k5, (yo, SSK, yo, SK2P, yo, k2tog, yo, k1) 9x, k5.

Row 533 (CR 19): Sl1, k1, k2tog, yo, k3, (yo, SSK, k1, k2tog, yo, k3) 9x, yo, SSK, k2.

Row 535 (CR 21): Sl1, k7, (yo, SK2P, yo, k5) 9x, k3.

Row 537 (CR 23): Sl1, k1, k2tog, yo, knit to last 4 sts, yo, SSK, k2.

Row 539 (CR 25): Sl1, knit to end of row.

Row 541 (CR 27): Sl1, k1, *k2tog, yo; rep from * to last 3 sts, k3.

Rows 43 & 45 (CRs 29 & 31): Sl1, knit to end of row.

Row 546 (CR 32): Loosely cast off in knit.

FINISHING: Weave in yarn ends and trim after blocking.

Blocking: Soak piece at least 20 minutes in lukewarm water. Roll in a towel and blot out excess water. If using blocking wires, run through slipped sts on sides. Smooth into shape on a flat surface and pin. Leave in place until thoroughly dry.



Lace Ball 100 colors shown (L to R): #2179, #2247, and #2170

ABBREVIATIONS:

approx	approximate(ly)	rep	repeat
BO	Bind Off	RS	Right Side
CO	Cast On	st(s)	stitch(es)
CR(s)	Chart Row(s)	WS	Wrong Side
k	knit	YO	Yarn Over
k2tog	knit two stitches together as one	sl	slip (unless otherwise stated, slip as if to purl)
meas	measures	SSK	Slip 2 stitches knit wise, one at a time, from the left needle to the right needle, then insert the left needle into the front of the slipped stitches and knit them together.
p	purl	SK2P	Slip 1 stitch knit wise, Knit 2 stitches together, Pass slipped stitch over stitches just knitted
p2tog	purl two stitches together as one		
PM	Place Marker		
PUK	Pick Up and Knit		

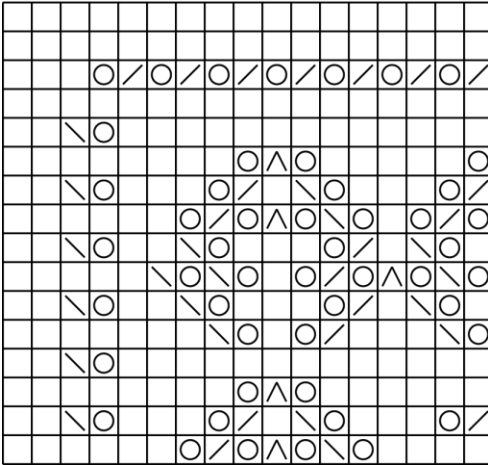
skacel collection, Inc.

Copyright © 2015 - All rights reserved.
www.skacelknitting.com

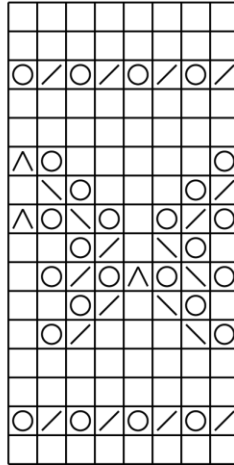
Lace Charts

Chart 3 - Ending Border:

83 82 81 80 79 78 77 76 75 74 73 72 71 70 69 68 67



8 - Stitch Repeat



18 17 16 15 14 13 12 11 10 9 8 7 6 5 4 3 2 1

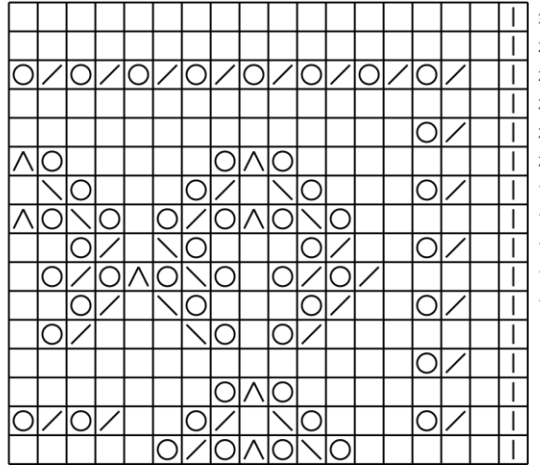
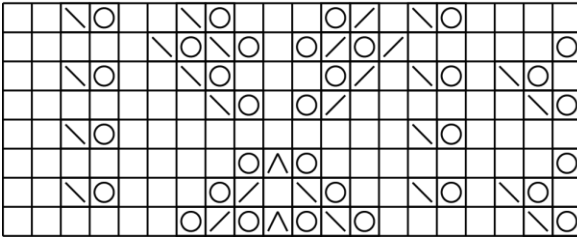
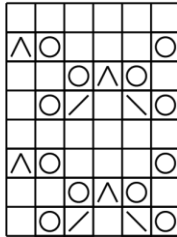


Chart 2 - Center Body & Borders:

83 82 81 80 79 78 77 76 75 74 73 72 71 70 69 68 67 66 65 64



6 - Stitch Repeat



21 20 19 18 17 16 15 14 13 12 11 10 9 8 7 6 5 4 3 2 1

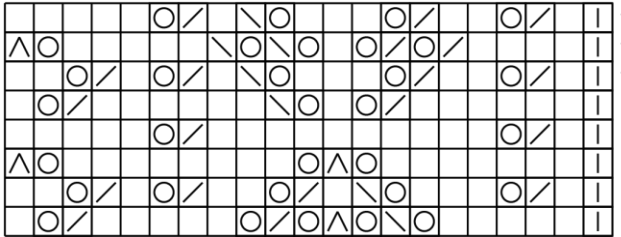
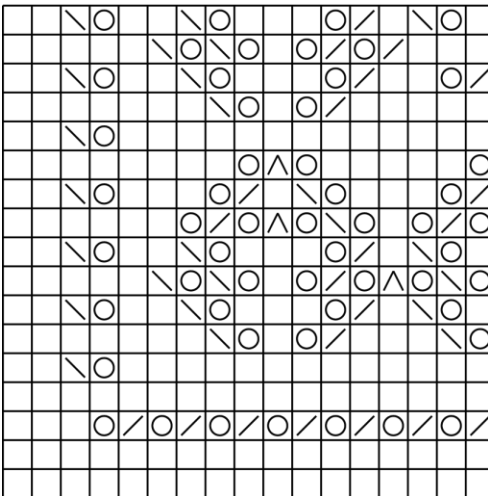
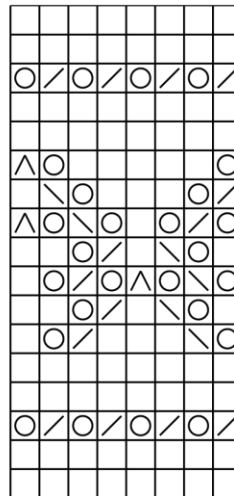


Chart 1 - Beginning Border:

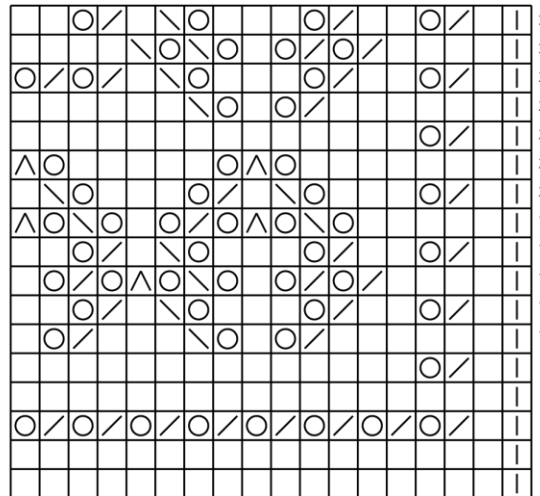
83 82 81 80 79 78 77 76 75 74 73 72 71 70 69 68 67



8 - Stitch Repeat



18 17 16 15 14 13 12 11 10 9 8 7 6 5 4 3 2 1



Legend:

- = k = SI
- = k2tog = SSK
- = SK2P = YO

skacel collection, Inc.

Copyright © 2015 - All rights reserved.
www.skacelknitting.com