

Empalme

by Cassandra Milani



MANOS DEL URUGUAY

SIZE

Finished circumference: 65" at wider edge; 51" at shorter edge.

Width: 8¾".

MATERIALS

Manos del Uruguay SILK BLEND (70% extra fine merino wool, 30% silk, approx. 50g/150 yds), 4 sk.

Shown in #3031 Nickel.

US 8/5mm straight needles, or size to obtain gauge.

GAUGE

20 stitches = 4" and 25 rows = 3½" over Short Row Wedge.

22 stitches = 4" and 11 rows = 1½" over Trinity Stitch.

NOTES

This circle scarf is knit in alternating stripes of Trinity Stitch and short-row wedges to give it texture and volume. It can be doubled for warmth in cooler weather, or worn loose on warmer days.

STITCH GUIDE

Trinity Stitch (multiple of 4 stitches plus 2)

Row 1 (WS): K1, *p3tog, (k1, p1, k1) in next stitch; repeat from * to last stitch, k1.

Rows 2, 4, 6, 8 and 10: Purl.

Row 3: K1, *(k1, p1, k1) in next stitch, p3tog; repeat from * to last stitch, k1.

Row 5: K1, *p3tog, (k1, p1, k1) in next stitch; repeat from * to last stitch, k1.

Row 7: K1, *(k1, p1, k1) in next stitch, p3tog; repeat from * to last stitch, k1.

Row 9: K1, *p3tog, (k1, p1, k1) in next stitch; repeat from * to last stitch, k1.

Row 11: K1, *(k1, p1, k1) in next stitch, p3tog; repeat from * to last stitch, k1.

Work Rows 1–11 for pattern.

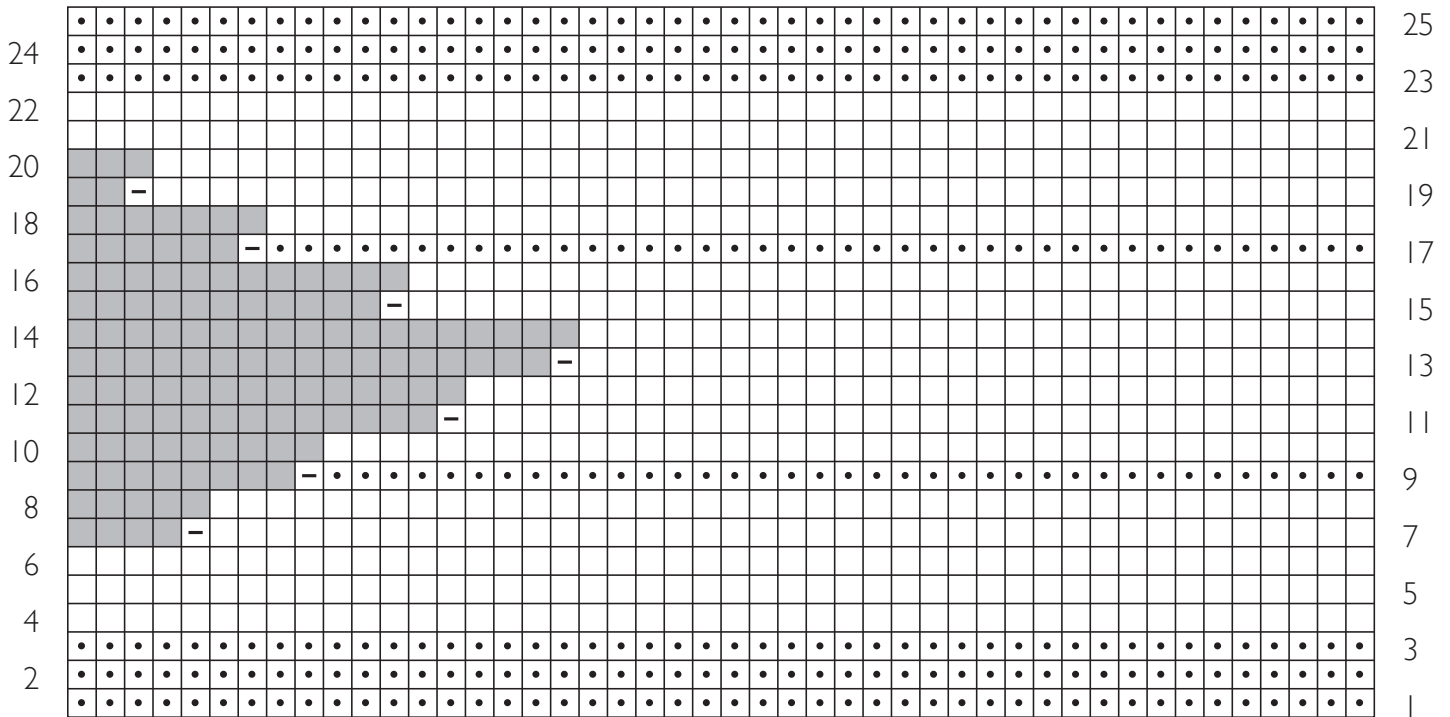


Short Row Wedge: (over 46 stitches)
 (Note: Pick up wraps as you come to them.)
 Row 1 (RS): Purl.
 Row 2: Knit.
 Row 3: Purl.
 Row 4: Purl.
 Row 5: Knit.
 Row 6: Purl.
 Row 7: K41, w&t.
 Row 8: P41.
 Row 9: P37, w&t.
 Row 10: P37.
 Row 11: K32, w&t.
 Row 12: P32.
 Row 13: K28, w&t.
 Row 14: P28.
 Row 15: K34, w&t.
 Row 16: P34.
 Row 17: P39, w&t.

Row 18: P39.
 Row 19: K43, w&t.
 Row 20: P43.
 Row 21: Knit.
 Row 22: Purl.
 Row 23: Purl.
 Row 24: Knit.
 Row 25: Purl.
 Work Rows 1–25 for pattern.

Short Rows:
 w&t (wrap and turn): wyib, slip next stitch to right hand needle as if to purl, bring yarn to the front, slip stitch back to left hand needle as if to purl, bring yarn to the back, turn work over to start the next row.
 Pick up wraps: when you reach the wrapped stitch, bring your right hand needle up through the wrap, then through the wrapped stitch and work the two together as one.

SHORT ROW WEDGE



- knit on RS, purl on WS
- purl on RS, knit on WS
- wrap and turn
- no stitch

ABBREVIATIONS

k: knit
p: purl
p3tog: purl 3 stitches together
RS: right side
WS: wrong side
wyib: with yarn in back

INSTRUCTIONS

COWL

Cast on 46 stitches.

Work 25 rows of Short Row Wedge.
Work 11 rows of Trinity Pattern.
Repeat the last 36 rows 12 more times.

Next Row (RS): Knit.
BO all stitches purlwise.

FINISHING

Block to measurements. Sew cast-on and bound-off edges together. Weave in ends.

