



Pattern Collection: Home



Reversible Cable Blanket

Designed by Rachel Brockman

SIZES

Baby Blanket (Throw Blanket)

FINISHED MEASUREMENTS

Length: 41 (62)''

Width: 37½ (58½)''

MATERIALS

Universal Yarn Major (100% acrylic;
200g/328 yds)

- 135 Toile – 3 (6) skeins

Needles: US Size 10 (6 mm) 40'' circular
or size needed to obtain gauge

US Size 9 (5.5 mm) 40'' circ *or size
needed to obtain gauge*

Notions: Tapestry needle, cable needle
(cn), 2 stitch markers

GAUGE

16 sts x 19 rows = 4'' in Cable Rib patt

Save time, check your gauge.

Knit, Relax, Smile, Repeat!

2018 © Universal Yarn, Inc.

All rights reserved.

www.universalyarn.com

This pattern may not be reproduced for business, trade or sale.

PATTERN NOTES

The Reversible Cable Blanket would make an elegant gift for a baby when knit in pastels as shown. It also would make a classic, cozy throw for your sofa, especially if knit using one of the many neutral and more “adult” colors Major has to offer. The stitch pattern is deceptively simple and creates a lofty, reversible fabric.

This blanket is knit flat from the bottom-up. A wide garter stitch border frames the cabled portion of the blanket.

4x4 Right Ribbed Cross (4X4 RRC)

Sl next 4 sts to cn and hold back, p2, k2 from LH ndl, p2, k2 from cn.

STITCH GUIDE

Cable Rib

(multiple of 12 sts + 2)

Row 1 (RS): * [K2, p2] 3 times; rep from * to last 2 sts, k2.

Row 2 (WS): P2, * [k2, p2] 3 times; rep from * to end.

Row 3: * K2, 4x4 RRC, p2; rep from * to last 2 sts, k2.

WS Rows 4-8:

P2, * [k2, p2] 3 times; rep from * to end.

RS Rows 5-7:

* [K2, p2] 3 times; rep from * to last 2 sts, k2.

Rep Rows 1-8 for patt.

BLANKET

With smaller ndl, cast on 150 (234) sts.

Bottom Border

Row 1 (RS): Sl 1 wyib, knit to end.

Row 2 (WS): Sl 1 wyib, knit to end.

Rep Rows 1-2, 5 more times. Change to larger ndl.

Cable Section

Row 1: Sl 1 wyib, k7, pm, work in Cable Rib to last 8 sts, pm, k8. Patt will be repeated 11 (18) times across row.

Row 2: Sl 1 wyib, k7, sl m, work in Cable Rib to m, sl m, k8.

Cont as est'd until piece meas approx 38½ (59½) from cast-on edge, ending with Row 8 of Cable Rib patt. Change to smaller ndl.

Top Border

Row 1 (RS): Sl 1 wyib, knit to end.

Row 2 (WS): Sl 1 wyib, knit to end.

Rep Rows 1-2, 5 more times.

Bind off all sts.

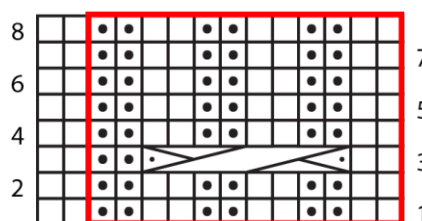
FINISHING

Block to finished measurements and weave in ends.





Abbreviations

approx	approximately
cn	cable needle
cont	continue
k	knit
LH	left hand
m	marker
meas	measures
ndl	needle
p	purl
patt	pattern
pm	place marker
rep	repeat
RS	right side
sl	slip
st(s)	stitch(es)
WS	wrong side
wyib	with yarn held in back

Cable Rib



Key

-  pattern repeat
-  knit on RS, purl on WS
-  purl on RS, knit on WS
-  4x4 RRC

Knit, Relax, Smile, Repeat!

2018 © Universal Yarn, Inc.

All rights reserved.

www.universalyarn.com

This pattern may not be reproduced for business, trade or sale.