

Helado

by Tanis Gray



MANOS DEL URUGUAY

SIZES

20" circumference, relaxed; one size fits most adults.

MATERIALS

Manos del Uruguay SILK BLEND (70% superfine merino, 30% silk; approx. 50g/150 yds), 1 sk

Shown in #3214 Oxygen

US 6/4mm ndls, 16" circular or one size smaller than size needed to obtain gauge

US 7/4.5mm ndls, 16" circular and double-pointed or size needed to obtain gauge

Stitch marker

Tapestry needle

GAUGE

20 sts and 30 rnds = 4" in lace pattern, blocked, with larger ndls.



ABBREVIATIONS

BOR: beginning of round

CO: cast on

k: knit

k1-tbl: knit 1 stitch through the back loop

k2tog: knit 2 stitches together

k3tog: knit 3 stitches together

ndl(s): needle(s)

p: purl

pm: place marker

rnd(s): round(s)

ssk: slip 2 sts, 1 at a time, knitwise to the right needle.

Return sts to the left needle in turned position then knit them together through the back loops

sssk: slip 3 sts, 1 at a time, knitwise to the right needle.

Return sts to the left needle in turned position then knit them together through the back loops

ssssk: slip 4 sts, 1 at a time, knitwise to the right needle.

Return sts to the left needle in turned position then knit them together through the back loops

st(s): stitch(es)

yo: yarn over (increase)

STITCH GUIDE

Lace Pattern (multiple of 20; worked in rnds)(see also chart)

Rnd 1: *K6, k2tog, k2, yo, k1, yo, k2, ssk, k5; repeat from * around.

Rnd 2: *K5, k2tog, k2, yo, k3, yo, k2, ssk, k4; repeat from * around.

Rnd 3: *K4, k2tog, k2, yo, k5, yo, k2, ssk, k3; repeat from * around.

Rnd 4: *K3, k2tog, k2, yo, k7, yo, k2, ssk, k2; repeat from * around.

Rnd 5: *K1, yo, k2, ssk, k1, k2tog, k2, yo; repeat from * around.

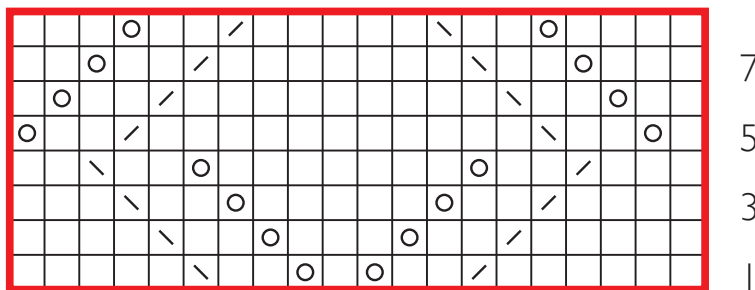
Rnd 6: *K2, yo, k2, ssk, k9, k2tog, k2, yo, k1; repeat from * around.

Rnd 7: *K3, yo, k2, ssk, k7, k2tog, k2, yo, k2; repeat from * around.

Rnd 8: *K4, yo, k2, ssk, k5, k2tog, k2, yo, k3; repeat from * around.

Repeat Rnds 1–8 for pattern.

LACE CHART



- knit
- k2tog
- ssk
- yo
- pattern repeat

INSTRUCTIONS

With smaller circular ndls, CO 100 sts. Pm for BOR and join to work in the rnd, being careful not to twist sts.

Establish Ribbing: *K1-tbl, p1; repeat from * around. Continue working ribbing as established until piece measures 1½" from CO edge.

Change to larger circular ndls.

Work Rnds 1–8 of Lace Pattern five times.

Shape crown

(Note: Change to double-pointed ndls when sts no longer fit comfortably on circular ndl.)

Rnd 1: *K5, k3tog, k2, yo, k1, yo, k2, sssk, k4; repeat from * around. [90 sts remain]

Rnd 2: *K3, k3tog, k2, yo, k3, yo, k2, sssk, k2; repeat from * around. [80 sts remain]

Rnd 3: *K1, k3tog, k2, yo, k5, yo, k2, sssk; repeat from * around. [70 sts remain]

Rnd 4: [sssk, yo, k7, yo, k3tog; repeat from * around. [55 sts remain]

Rnd 5: *K2tog; repeat from * to last st, k1. [28 sts remain]

Rnd 6: *K2tog; repeat from * to end of rnd. [14 sts remain]

Rnd 7: *K2tog; repeat from * to end of rnd. [7 sts remain]

Break yarn, leaving 10" tail. Weave tail through remaining sts and cinch shut. Secure on WS.

Finishing

Weave in loose ends.

Block to measurements.

